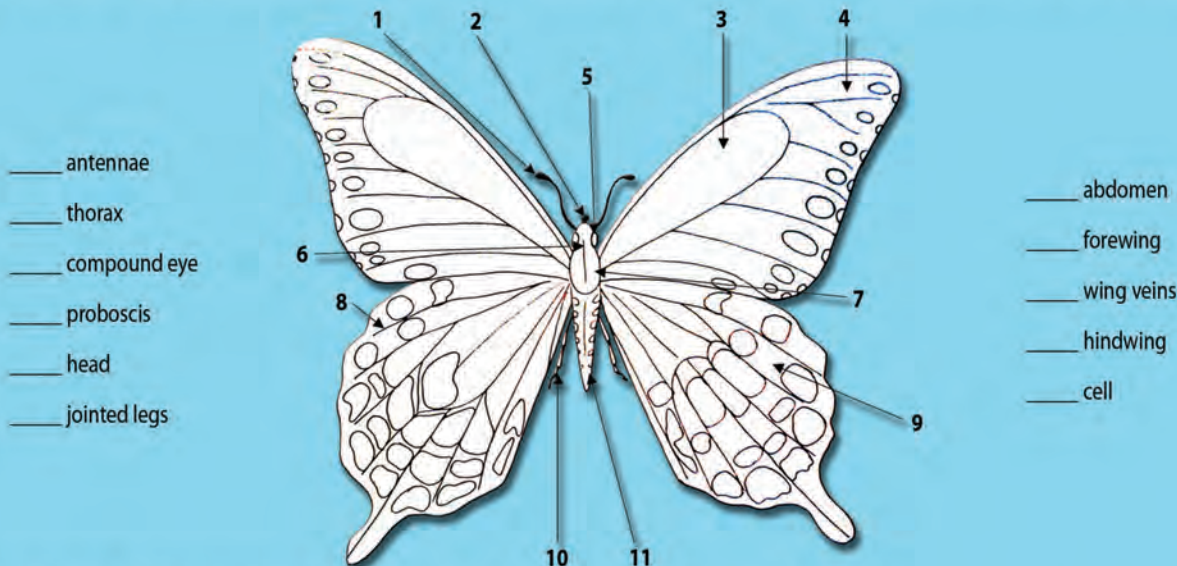


KID'S KORNER

INSECT ACTIVITY SHEET

Amazing
Butterflies
Exhibit
February 5, 2011 – May 8, 2011

A) **Anatomy of a Butterfly:** The Spicebush Swallow Tail is Mississippi's state butterfly! Place the number of each body part by its name.



- ___ antennae
- ___ thorax
- ___ compound eye
- ___ proboscis
- ___ head
- ___ jointed legs

- ___ abdomen
- ___ forewing
- ___ wing veins
- ___ hindwing
- ___ cell

B) Write **M** in the blank if the sentence describes a moth. Write **B** if the sentence describes a butterfly.

Butterfly



- | | |
|----------------------------------|-------------------------------|
| 1. ___ Fly around at night | 4. ___ Has thin antennae |
| 2. ___ Fly around during the day | 5. ___ Has a thick furry body |
| 3. ___ Has feathery antennae | 6. ___ Has a thinner body |

Moth



Butterfly diagram designed by Mary Alston

Key: A) 1. antennae 2. proboscis 3. cell 4. forewing 5. compound eye 6. head 7. thorax 8. wing veins 9. hindwing 10. jointed legs 11. abdomen
B) 1. M 2. B 3. M 4. B 5. M 6. B



MISSISSIPPI
Museum of
Natural
Science



The Mississippi Museum of Natural Science is located on I-55 at Lakeland Drive - within Lefleur's Bluff State Park. From I-55, take Exit 98B - East on Lakeland - South on Highland Drive - Left at Park entrance.
601.354.7303
www.msnaturalscience.org